



Hot Water Pressure Washers

HEO Series



Performance Under Pressure.®

HEO Series

Electric Powered Oil-Heated - Belt Drive

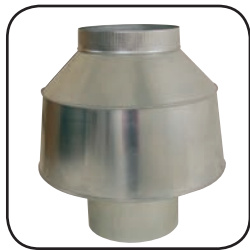
Designed, manufactured and tested in the Mi-T-M tradition of quality, this stationary diesel powered hot water pressure washer is the perfect choice for any efficient wash bay set-up.



Control panel shown with On/Off burner switch, On/Off pump/motor switch, and adjustable thermostat



Beckett burner with fuel/water separator



10-inch draft diverter included (21-inch height)



General belt drive triplex ceramic plunger pump has the best warranty in the industry



HEO-3004-0E3G shown with panels off

Shown with optional fuel tanks HX-0218

Additional Features:

Pump

- Thermal relief valve
- Factory preset trapping unloader

Motor

- Open drip-proof electric motor with thermal overload protection

Frame

- Powder coated steel frame with removable side panels

Units Include:

- Quick connect nozzles (0°, 15°, 25°, and 40°)

Miscellaneous

- Temperature rise 150°F/66°C above ambient, maximum outlet temperature is 200°F (250°F/121°C outlet temperature with steam option)
- CAD cell relay with photo eye
- Designed to run off an existing fuel tank (optional fuel tanks are available)



HEO Series

Electric Powered Oil-Heated - Belt Drive



Mi-T-M offers a full line of products including; cold and hot water pressure washers, air compressors, portable generators, air compressor/generator combination, air compressor/generator/welder combination, wet/dry vacuums, jobsite boxes, portable heaters, and water treatment systems.

HEO Series

Electric Powered Oil-Heated - Belt Drive

Model Number	PSI	GPM	Horsepower/Motor	BTU per hour	Dimensions (LxWxH)	Ship Wt.	Net Wt.
HEO-2004-0E2G	2000	4.2	6.0 HP, 230V, 1Ø, 27.1A	386,400	56.5in.x29in.x49.75in.	844 lb.	724 lb.
HEO-2004-0E3G	2000	4.2	6.0 HP, 230V, 3Ø, 17.6A	386,400	56.5in.x29in.x49.75in.	844 lb.	724 lb.
HEO-2004-0E4G	2000	4.2	6.0 HP, 460V, 3Ø, 8.8A	386,400	56.5in.x29in.x49.75in.	844 lb.	724 lb.
HEO-2004-0E8G	2000	4.2	6.0 HP, 208V, 1Ø, 29.8A	386,400	56.5in.x29in.x49.75in.	844 lb.	724 lb.
HEO-2004-0E9G	2000	4.2	6.0 HP, 208V, 3Ø, 20.1A	386,400	56.5in.x29in.x49.75in.	844 lb.	724 lb.
HEO-3004-0E2G	3000	3.9	8.0 HP, 230V, 1Ø, 38.6A	393,000	56.5in.x29in.x49.75in.	878 lb.	758 lb.
HEO-3004-0E3G	3000	3.9	8.0 HP, 230V, 3Ø, 21.6A	393,000	56.5in.x29in.x49.75in.	878 lb.	758 lb.
HEO-3004-0E4G	3000	3.9	8.0 HP, 460V, 3Ø, 10.8A	393,000	56.5in.x29in.x49.75in.	878 lb.	758 lb.
HEO-3004-0E8G	3000	3.9	8.0 HP, 208V, 1Ø, 42.1A	393,000	56.5in.x29in.x49.75in.	878 lb.	758 lb.
HEO-3004-0E9G	3000	3.9	8.0 HP, 208V, 3Ø, 24.6A	393,000	56.5in.x29in.x49.75in.	878 lb.	758 lb.
HEO-3005-0E2G	3000	4.8	10.0 HP, 230V, 1Ø, 45.6A	428,400	56.5in.x29in.x49.75in.	878 lb.	758 lb.
HEO-3005-0E3G	3000	4.8	10.0 HP, 230V, 3Ø, 26.6A	428,400	56.5in.x29in.x49.75in.	878 lb.	758 lb.
HEO-3005-0E4G	3000	4.8	10.0 HP, 460V, 3Ø, 13.3A	428,400	56.5in.x29in.x49.75in.	878 lb.	758 lb.
HEO-3005-0E8G	3000	4.8	10.0 HP, 208V, 1Ø, 50.3A	428,400	56.5in.x29in.x49.75in.	878 lb.	758 lb.
HEO-3005-0E9G	3000	4.8	10.0 HP, 208V, 3Ø, 30.6A	428,400	56.5in.x29in.x49.75in.	878 lb.	758 lb.

OPTIONS

Part Number	Description	Fits Models
HX-0104	K7 unloader (flow sensitive) (auto start/stop N/A) - Converts pressure trapping unloader system to flow actuated K7 unloader.	HEO-3004 models
HX-0106	Hour meter - Displays number of hours unit has been in operation	All models
HX-0107*	Time delay shutdown - Timer will shut unit off automatically when trigger gun is released and timer reaches setting	All models
HX-0108*	(1) Remote station (auto start/stop N/A) - Adds control box which may be mounted away from unit to control on/off, burner and soap injection	All models
HX-0110	Additional remotes (up to 3) - Additional remotes that may be added to unit after the first remote is installed	All models
HX-0111	Auto start/stop - When trigger gun is released timer will turn unit off, when trigger gun is pulled unit will restart	All models
HX-0112	K7 unloader (flow sensitive) (auto start/stop N/A) - Converts pressure trapping unloader system to flow actuated K7 unloader.	HEO-2004 & HEO-3005 models
HX-0114	Dual gun - Two guns may be sprayed at the same time, flow is divided between the two guns while each operator maintains equal system pressure	HEO-3005 models
HX-0115	Stainless-steel access panels - Converts powder coated painted access panels to stainless-steel material	All models
HX-0116	Stainless-steel coil wrap - Converts powder coated painted access panels to stainless-steel material	All models
HX-0117	Painted box kit - Adds painted side and end panels	All models
HX-0118	Painted and stainless-steel box kit - Adds stainless-steel side panels and painted end panels	All models
HX-0120	250°F steam - Steam option adjusts unloader valve counter-clockwise increasing outlet temperature to 250°F while lowering system pressure	HEO-2004 models
HX-0121	250°F steam - Steam option adjusts unloader valve counter-clockwise increasing outlet temperature to 250°F while lowering system pressure	HEO-3004 models
HX-0122	250°F steam - Steam option adjusts unloader valve counter-clockwise increasing outlet temperature to 250°F while lowering system pressure	HEO-3005 models
HX-0124	Auto start/stop and first remote - When trigger gun is released timer will turn unit off, when trigger gun is pulled unit will restart; adds control box which may be mounted away from unit to control on/off, burner and soap injection	All models
HX-0216	Elevated float tank, 4.0 GPM - Float tank is located at the back of the unit	All models
HX-0217	Elevated float tank, 5.0 GPM - Float tank is located at the back of the unit	All models
HX-0218^	(2) 10-gallon fuel tanks - Adds 20-gallon fuel capacity to unit versus hose hook-up to fuel supply	All models
HX-0223*	Time delay shutdown and first remote - Timer will shut unit off automatically when trigger gun is released and timer reaches setting; Adds control box which may be mounted away from unit to control on/off, burner and soap injection	All models

*Options HX-0107 & HX-0108 cannot be ordered together, you will need to order HX-0223 instead.

^You must also order option HX-0216 or HX-0217 when ordering HX-0218.



HX-0108
Optional remote box



Mi-T-M Corporation
8650 Enterprise Drive
Peosta, IA 52068
800-553-9053
563-556-1235 fax
corp@mitm.com
www.mitm.com

Distributed by: